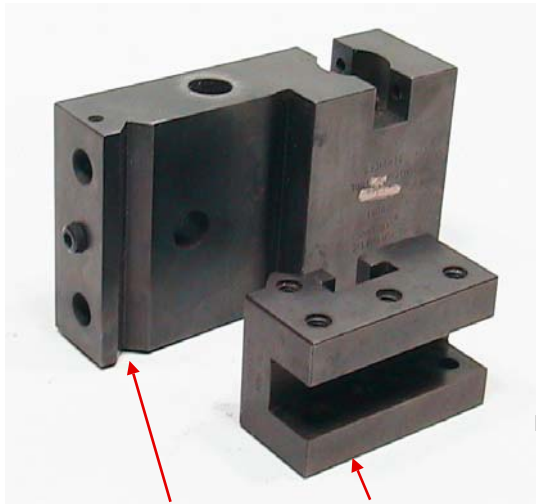


*Dear Tool Setter,
Do you find yourself;*

*Constantly resetting your tool after it has been reground ?
Fed up with buying LH and RH tools that only get used occasionally when one should do ?
Frustrated at the high cost of existing quick change tooling systems to solve this problem ?*

The QUATTRO - Cost Effective, Universal, Flat Form, Quick Change tool holder system solves these problems

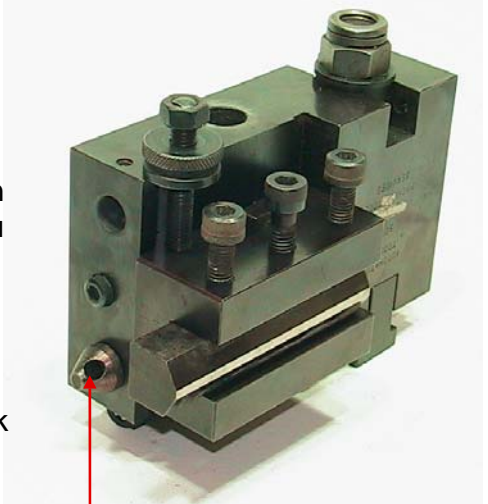


Basic Block and Holder

Tool setting and configuration is critical to achieving minimal cycle time.

Once the machine has been set, wouldn't it be nice if you could just walk away and forget about it!!

But we all know that tools wear and break which means that all your hard work seems to undo itself and your back to resetting the tool holder again.



Coolant jet - Fed Internally

For basic turning and facing tool tip replacement systems may be an effective solution.

However, for complex shapes and forms typically you will be using a high speed steel tool ground to your requirements.

When your HSS tool wears the holder has to be removed and then reset after the tool is reground which can be time consuming

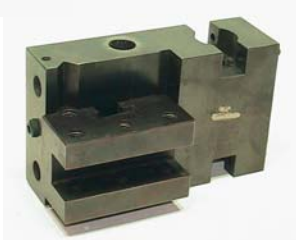
You may also have several tool holders to cater for different positions and adjustment on these is usually very basic.



Low Position



High Position



The **Quattro** system is made in two parts and both block and holder can be reversed to suit any position required from front or rear tool slide and close to or away from the collet face.

Coolant is fed into the main block and is ejected from the adjustable nozzle as desired.

The block is squared on the tool slide with adjusting screws and then clamped in position.

The holder can then be removed without affecting alignment for re-grinding, presetting and refitting to the block. A second holder allows for faster, preset change over.